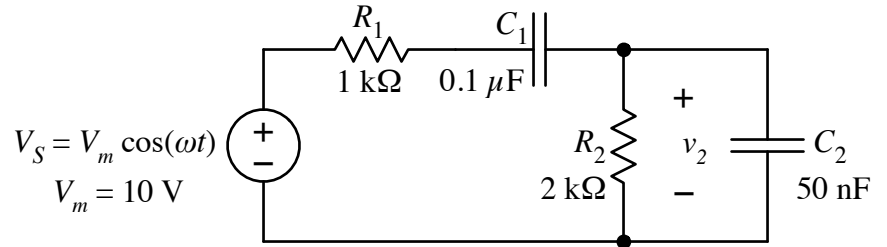


For the circuit shown, calculate the complex value of the voltage  $v_2$ , for angular frequencies of 5 krad/s, 10 krad/s, and 20 krad/s. Express the answers in magnitude / phase form. Don't forget about units.



$$\omega = 5000 \text{ rad/s} : \tilde{v}_2 = \underline{\hspace{15em}}$$

$$\omega = 10,000 \text{ rad/s} : \tilde{v}_2 = \underline{\hspace{15em}}$$

$$\omega = 20,000 \text{ rad/s} : \tilde{v}_2 = \underline{\hspace{15em}}$$